



Installation guide

Primo wood/alu sliding doors

Content:

1. Important information
2. Inspection of door and opening
3. Preparation of opening
4. Installation of frame
5. Glazing
6. Final inspection

1. Important information

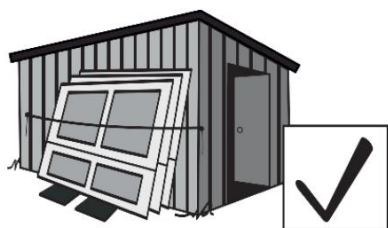
Please read this installation guide carefully before beginning the installation. Failure to follow the instructions and recommendations provided in this guide can result in product malfunction, safety hazards and denial of warranty claims.

Note! During installation, pay special attention to install the door square, level and on a flat surface (without unevenness and owing). Do not install door before the opening is properly prepared!

Keep in mind that it takes significant time and skills to prepare the opening, install the door and ensure its proper operation.

WE RECOMMEND PROFESSIONAL INSTALLATION ASSISTANCE!

Store and handle the door carefully:



- ✓ Store in an upright vertical position (with threshold down) and against a flat surface.
- ✓ Always keep frame raised off the ground on pieces of wood, cardboard, etc.
- ✓ Do not put stress on joints, corners or frames.
- ✓ Protect surfaces from damage, dirt and water.
- ✓ Lift in vertical position using safe lifting techniques and with sashes locked. Do not drag on floor.
- ✓ Do not work alone as two or more people are required.

2. Inspection of door and opening

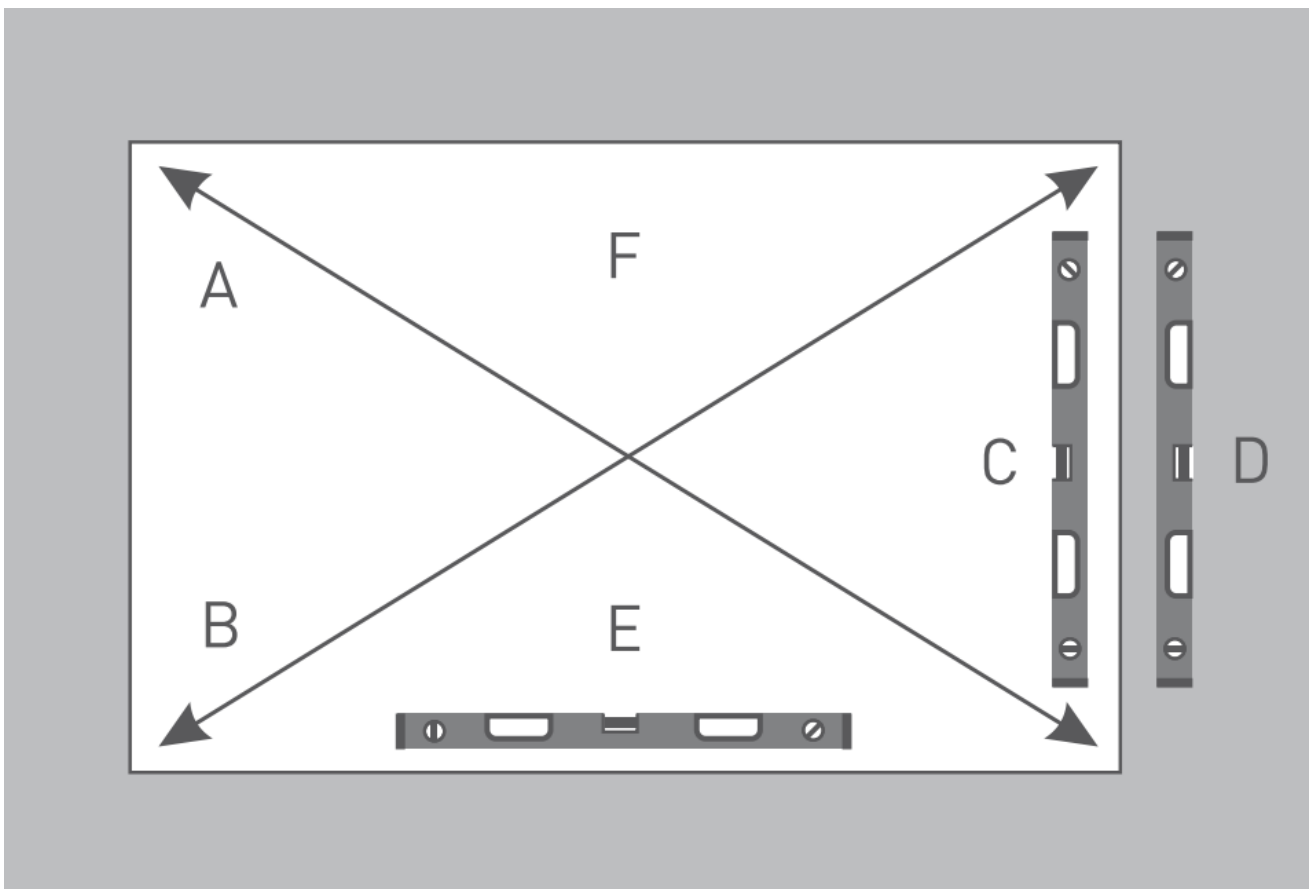
Inspect door:

1. Remove packaging materials.
2. Refer to your order confirmation for opening direction and door sashes information.
3. Inspect the door for cosmetic damage and ensure that it is the correct product (size, number of sashes, colour, etc.)

Inspect opening:

Note! A laser or similar precise measuring equipment should be used to perform the following measurements:

1. The optimal gap between the opening and frame is 15 mm.
2. Verify that the opening is square (A and B). The opening is square if these measures are identical.
3. Verify that the opening and surface of wall is vertical (C and D).
4. Verify that the opening is level (E). The opening cannot have any unevenness or owing.
5. Ensure that lintel is sufficiently supported (F). No pressure can be transferred to the door frame after it is installed!



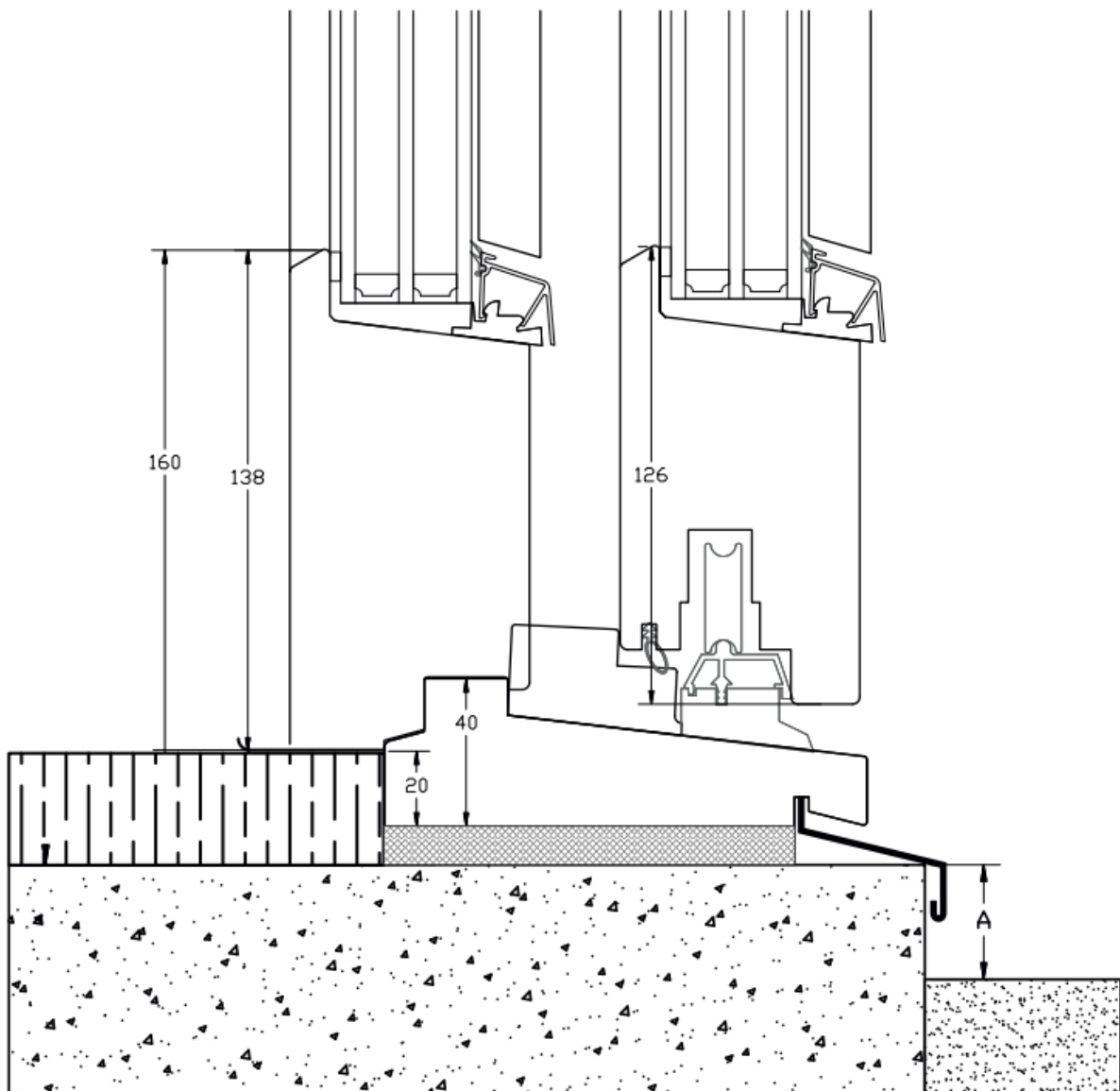
ANY DEVIATIONS NEED TO BE CORRECTED BEFORE INSTALLING THE DOOR!
CONTACT A PROFESSIONAL IF NECESSARY.

3. Preparation of opening

Note! Before proceeding with the installation, carefully consider the design of the opening to minimize the possible ingress of water.

Do not use interior flooring, such as parquet or lofted wadding to seal the opening.

- Pay special attention to sufficiently insulate under the door threshold.
- We always recommend that the exterior flooring is lower than the foundation to avoid ingress of water.
- In areas with heavy rain and wind, the threshold's underside should be set approximately 10 cm above the exterior flooring (A):



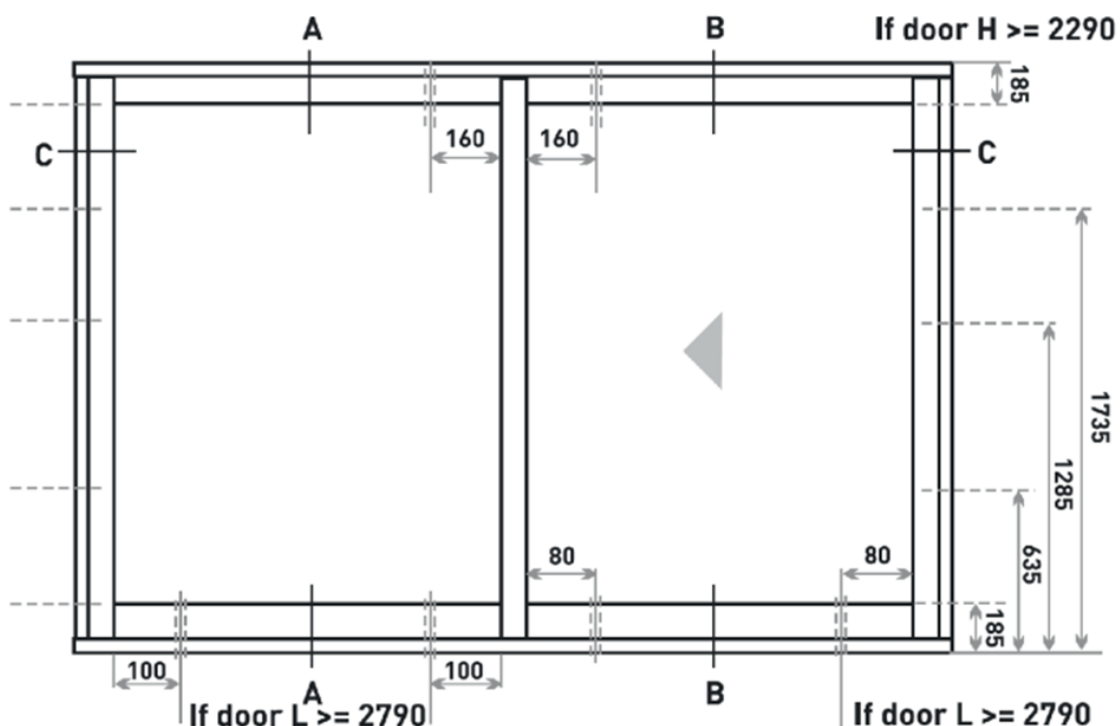
4. Installation of frame

Note! It is crucial that the frame is installed correctly for the sliding door to operate efficiently.

Carefully follow these steps:

1. Place blocks where the threshold should be set with a maximum distance of 30 cm. These blocks will create a level ground for the door. The blocks must support the whole depth of the threshold.
2. Staple or glue the blocks to the ground to restrain them from moving.
3. Place the door in the opening. Use laser to ensure that the threshold is level.
4. Fix the threshold through the pre-drilled holes (see drawing on next page). For sliding doors that have pre-drilled holes in the fixed sash's filling, the pre-drilled holes must be filled with sealant before screws are screwed in.
5. Carefully insulate under the whole depth of the threshold. We do not recommend using polyurethane foam.

Note! For sliding doors with flush thresholds (i.e. handicap suitable) the opening's ground needs to be dead straight before placing the door in the opening and fixing the threshold as blocks cannot be used to level the ground.



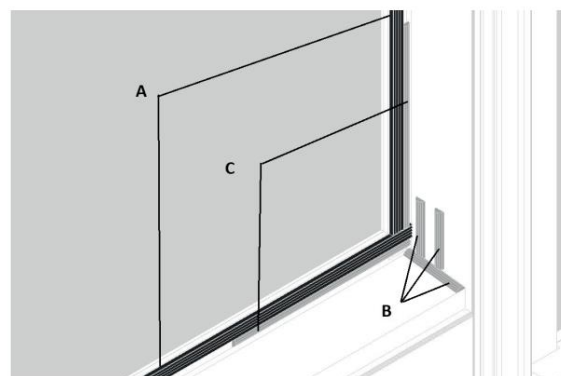
6. Depending on the door's height, each side frame will have 3-5 pre-drilled holes. See drawing on the previous page. Place blocks of different thickness in the same height as the pre-drilled holes around the side frames to ensure that the door remains square during fixing. The screws should be screwed through the blocks. In the door's full height, control that both side frames are parallel with the sliding sash.

7. Fix the top frame through the pre-drilled holes. Use blocks to ensure that the top frame does not bend upwards during fixing. **Remember that no pressure can be transferred downwards from the lintel to the door.**
8. Insulate around the side frames and top frame. We do not recommend using polyurethane foam.
9. Install the outside threshold bracket to prevent water ingress.

5. Glazing

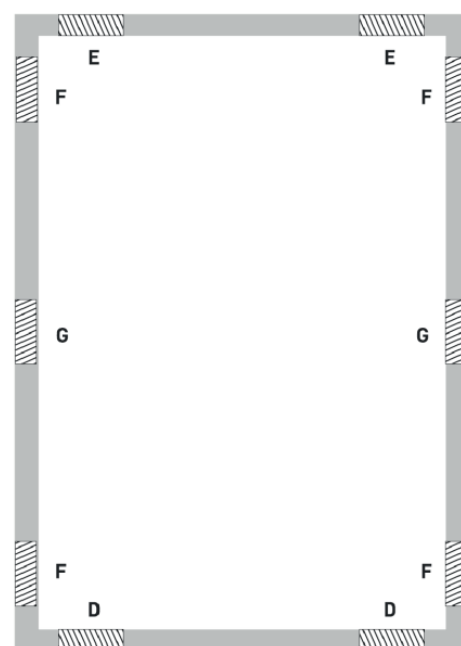
Clean the glass rebate and wipe off excess water/moisture.

1. Stick the self-adhesive black gasket (4x9mm) to the glass trench (A). In the corners where the gaskets meet, make sure to press the gaskets well together to avoid gaps if they shrink.
2. Apply sealant to the glass rebate's corners between the horizontal and vertical parts of the sash (B)
3. Apply adhesive sealant (e.g. Tech-7) to the corners of the glass trench with a length of approximately 100 mm in horizontal and vertical directions (C). The thickness of the string needs to be minimum 4 mm as it will glue the glass unit to the sash and create a sealing in the corners.
4. Place two support packers sideways on the bottom glass rebate (D). From each corner to each support packer the distance should be approximately 100 mm.



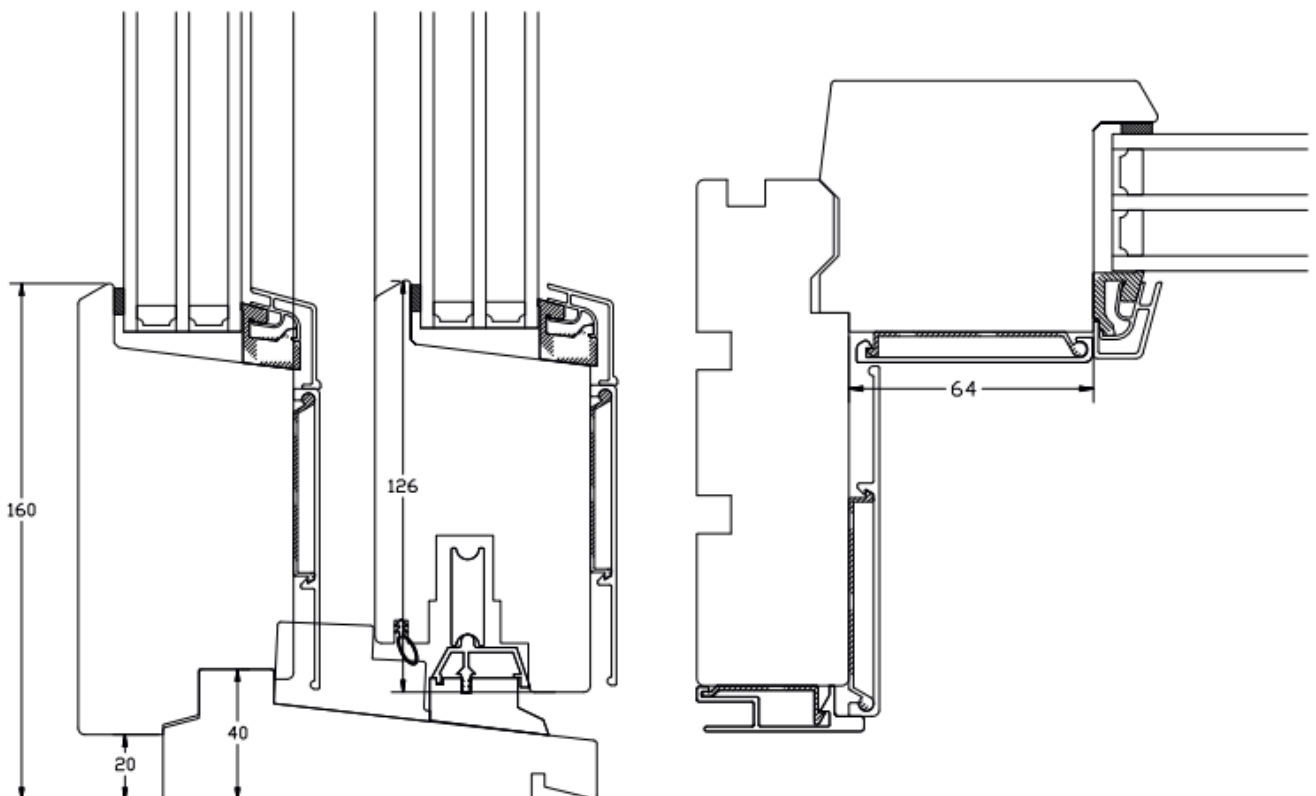
Note! Make sure that all the support packers are placed evenly with the edges of the glass unit. The support packers should support the full thickness of the glass unit, but still not go beyond the edges of the glass unit.

5. Lift the glass unit into the sash and place it firmly on the bottom support packers. Push it firmly towards the gasket.
6. Insert two support packers on top of the glass unit, directly above the bottom support packers (E).
7. Insert two support packers on each side of the glass unit, approximately 100 mm from the corners (F). These support packers must fit so tight that the glass unit cannot move sideways. On sliding sashes, one support packer should be inserted on each side of the glass unit in the same height as the door stop (G).
8. Apply sealant to the side support packers to avoid them from slipping.



Installation of glasslist:

1. Fix the clips with a thick and angled underside to the bottom glass rebate. Ensure that the glass unit is pressed against the gasket on the inside. Press the clips firmly towards the glass unit before fixing. Fix the clips 40-50 mm from the corners and for every 120-150 mm of the remaining length. Use stainless screws or staples for fixing.
2. Fix the clips with a thin and straight underside to the top glass rebate. Ensure that the glass unit is pressed against the sealing on the inside. Press the clips firmly towards the glass unit before fixing. Fix the clips 40-50 mm from the corners and for every 120-150 mm of the remaining length.
3. Click the straight cut aluminium lists in place [top and bottom]. Hold the aluminium lists over the clips with a small angel and press the lists from the front. Hit with a rubber hammer or wooden block if necessary. Ensure that the aluminium list's rubber gaskets are touching the glass unit. **Note!** The wide glasslist should be in the bottom.
4. Equal clips as the ones used on top, should be fixed to the sides of the glass rebate. Press the clips firmly towards the glass unit before fixing. Fix the clips 30-40 mm from the corners and for every 120-150 mm of the remaining height.
5. Click the angled cut aluminium lists in place with the same techniques as described in point 3
6. When all the aluminium lists are in place, carefully hit them with a wooden block to ensure that they are correctly clicked in place and that all the rubber gaskets touch the glass unit.



6. Final inspection

Before leaving site:

- ✓ Before testing the sliding door, make sure tracks are clean and clear of any debris that could damage the operation of the door.
- ✓ Test the sliding door and perform necessary adjustments if it is not operating efficiently.
- ✓ Clean the glass with a mild soap to remove dirt and stickers.
- ✓ Remove and dispose waste collected at the building site.

Maintenance:

- ✓ Remove snow and ice from the threshold.
- ✓ The threshold requires yearly treatment. It is oiled at our factory before delivery.
- ✓ Moving parts should be lubricated with oil once a year.